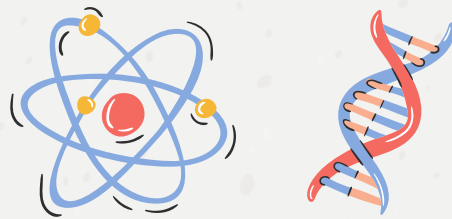


SDSU

College of Sciences
Student Success Center

Diversity in Sciences Panel



FRIDAY 04.28.2023

10:30 am - 1:00 pm

**SDSU Shiley Bioscience
Center, Gold Auditorium**

verizon^v

PROGRAM OVERVIEW

PANELISTS



DR. EDRAY HERBER GOINS - KEYNOTE SPEAKER

Professor of Mathematics, Pomona College

Edray Herber Goins grew up in South Los Angeles, California. The product of the Los Angeles Unified (LAUSD) public school system, Goins attended the California Institute of Technology, where he majored in mathematics and physics, and earned his doctorate in mathematics from Stanford University. He has worked as a researcher at both Harvard and the National Security Agency; and has taught at both Caltech and Purdue. Goins is currently a Professor of Mathematics at Pomona College in Claremont, California. He has published over 25 journal articles in areas such as applied mathematics, graph theory, number theory, and representation theory; and on topics such as Diophantine equations, elliptic curves, and African Americans in mathematics. He runs a federally-funded Research Experience for Undergraduates (REU) titled Pomona Research in Mathematics Experience (PRIME).

DR. KEVIN PELAEZ

Manager Data Scientist for Duo Security Email: jdicenzo@rinconconsultants.com

I'm currently a data scientist for Duo Security. Before this, I was in graduate school and a teacher/professor. Central to my current position is leveraging my various professional and cultural experiences. For example, I draw on my communication skills from when I taught high school as well as technical and project management skills from being in graduate school. In terms of cultural experiences, I draw on my own experiences as a first-gen queer Latino to help promote a more diverse and inclusive workforce, including building relationships with future generations and participating in conversations about data ethics.



DR. SYLVIE SAKATA

*Executive Director and Head of External Research Solutions, Pfizer Inc
[linkedin.com/in/sylvie-sakata-470754a](https://www.linkedin.com/in/sylvie-sakata-470754a)*



Sylvie currently holds the position as Executive Director and Head of External Research Solutions at Pfizer Research and Development. She leads a global team in charge of sourcing for Medicine Design/Research Units at Pfizer. After receiving her PhD in organic synthesis from UCI under Professor Larry Overman, Sylvie started in the Chemical R&D at Agouron Pharmaceutical as a research scientist. She had the opportunity to lead several key projects including the development of the Rhino Virus and HIV NNRTI programs. In 2001, she moved to Medicinal Chemistry as a Senior Principal Scientist where she has had the opportunity to continue to work in many Antiviral programs at Warner Lambert/Pfizer. In mid-2008, she held the position of a Senior Director to lead the External Research Solutions based in Pfizer La Jolla in charge of Chemistry, Biology, Reagent Provision, and DMPK services in the pre-clinical sourcing area for many Pfizer Research Units. She has extensive experience in setting up innovative strategies and implementation of novel business models leading BBXC and DEL consortium, operations and integrated discovery research capabilities to support projects working with global partners. More recently, she led the research sourcing efforts Paxlovid where her team was instrumental in supporting the delivery for API through an integrated approach with external partners.

PROGRAM OVERVIEW

PANELISTS

GABRIEL J. ECHAVES

Healthcare Recruiter, Maxim Healthcare Group
[linkedin.com/in/gabriel-echaves-38a229167](https://www.linkedin.com/in/gabriel-echaves-38a229167)

I grew up in the lower-income areas of San Diego. I learned quickly that due to my socioeconomic status, I had to work harder in order to attain my goals. Getting to college was new in my family. My mother worked hard to make sure we had the necessities but there were little resources for much else. I worked hard in sports and academics to achieve my goals and get to where I am now. I now look back at great appreciation as I now value the lessons learned from my upbringing.



SANCHI D. CHANDAN

Product Manager, Companion Diagnostics, Thermo Fisher
[linkedin.com/in/sanchi-chandan](https://www.linkedin.com/in/sanchi-chandan)

I have been a biotech professional based in Carlsbad for over 14 years and Molecular Biology has always been my passion. I have worked in R&D, Operations, Quality, and Product Management Organization. I have two master's Degrees, one in Cell and Molecular Biology and the other in Microbiology. I am a lifelong learner and have certification from UCSD in QC/QC in Drugs and Biologics. My life experiences have given me the courage and resilience to navigate the workplace and be a strong proponent of developing team members to meet organizational goals and promote a thriving team environment. Additionally, I enjoy volunteering in STEM-related activities, am a proponent of STEM education and leadership in young adults, and mentor students and professionals who want to enter the Biotech industry.



ATHENA PAPASODERO

Associate Scientist, Scientist, Research Associate, Enlaza Therapeutics
[linkedin.com/in/athena-papasodero](https://www.linkedin.com/in/athena-papasodero)

Athena Papasodero is a San Diego native who attended Morse High. Athena identifies as a person of mixed race and grew up surrounded by many cultures. She had humble beginnings which fueled her passion for education. From a young age she viewed education as the doorway to success, a way to leave poverty behind. Inspired by her beloved immigrant grandparents and single-mother, she tenaciously followed her dreams of higher education. She earned her Masters in Biomedical Science at the University of California-Irvine and her Bachelors in Molecular, Cell, and Developmental Biology at the University of California-Santa Cruz (Go Slugs!). Athena now works as an analytical biochemist and characterizes the biophysical properties of therapeutic drugs. Athena views her background and upbringing as an advantage because it has allowed her to thrive and bring her unique ideas into the world to promote innovation.

